

Vintage



Double Side
Burner
VSB2G



SideSear Burner
VGSZ



24" PowerMaxx Burner
VPMAXX24
PowerMaxx Drawer
VPMAXD24



Food Warmer
VFW



Insulated Jackets
Available in 30", 36",
42", & 56" sizes



Vinyl Covers
Available in 30", 36", 42",
& 56" sizes for built-in and cart applications



17" Access Door
VAD17



Double Access Doors
VAD30 - 30" Unit
VAD36 - 36" Unit
VAD42 - 42" Unit



2 Drawer System
V2DR



Paper Towel Holder
VTH



2 Drawer/Utensil
Storage
VU2DR



Trash/Recycle
Center
VTRC



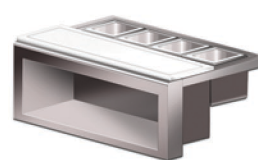
Door/Drawer Combo
VDDC



Pantry/Drawer Combo
VPDC42 - 42" Unit
VPDC56 - 56" Unit



Sealed Pantry
VDSP30 - 30" Unit
VDSP36 - 36" Unit
VDSP42 - 42" Unit



30" Plating &
Garnish Center
VPS30P



Ice Chest/Bartender
(Speed Rail Included)
VCTIC



Prep & Waste Chute
VPWC



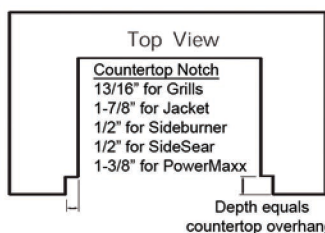
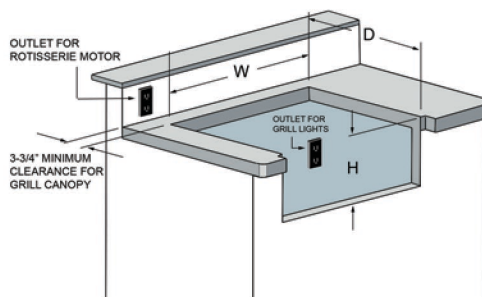
Blender Station
VBS



HS24RO1R - 24" Outdoor Refrigerator
Single/Double Tap Ready



15" Ice Maker
H50IMSR



GRILL	Cutout Dimensions		
	W	D	H
VBQ30	28-1/2"	23"	10-1/4"
VBQ36	34-1/2"	23"	10-1/4"
VBQ42	40-1/2"	23"	10-1/4"
VBQ56	54-1/2"	23"	10-1/4"
INSULATED JACKET	Cutout Dimensions		
	W	D	H
VIJ30	31-3/4"	24-3/8"	11"
VIJ36	37-3/4"	24-3/8"	11"
VIJ42	43-3/4"	24-3/8"	11"
VIJ56	57-3/4"	24-3/8"	11"
SIDEBURNER SIDESEAR	Cutout Dimensions		
	W	D	H
VSB2G	13-1/4"	23"	10-1/4"
VGSZ	13-1/4"	23"	10-1/4"
POWER MAXX	Cutout Dimensions		
	W	D	H
VPMAXX24	21-1/2"	22-1/2"	10-1/4"

Model	Overall	Cutout
V2DR	16 4/5" W X 14 1/2" H X 21"D	14 5/8" W X 12 1/4" H
VAD17	16 1/2" W X 21 1/8" H	14 1/8" W X 18 3/4" H
VAD30	30" W X 21 1/8" H	27 5/8" W X 18 3/4" H
VAD36	36" W X 21 1/8" H	33 5/8" W X 18 3/4" H
VAD42	42" W X 21 1/8" H	39 5/8" W X 18 3/4" H
VBS	24" W X 14 1/2" H	21 7/8" W X 12 1/4" H
VCTIC	27 5/8" W X 13 1/2" H 20 5/8" D	26" W X 11 3/4" H X 19" D
VDDC	31 4/5" W X 21 1/8" H X 21"D	29 1/2" W X 18 7/8" H
VDSP30	30 3/8" W X 21 1/8" H	28 1/8" W X 18 7/8" H
VDSP36	36 3/8" W X 21 1/8" H	34 1/8" W X 18 7/8" H
VDSP42	42 3/8" W X 21 1/8" H	40 1/8" W X 18 7/8" H
VDT30G	29 13/16" W X 25 1/2" D X 11 1/16" D	28 1/2" W X 23" D X 10 1/4" H
VEN17	16" W X 20 1/2" H	14 1/4" W X 18 3/4" H
VEN30	29 1/4" W X 20 1/2" H	27 3/4" W X 19" H
VEN36	35 1/4" W X 20 1/2" H	33 3/4" W X 19" H
VEN42	41 1/4" W X 20 1/2" H	39 3/4" W X 19" H
VFW	14" W X 26 5/8" D X 11 1/16" H	13 1/4" W X 23" D X 10 1/4" H
VPDC42	42" W X 21 1/8" H X 21"D	39 3/4" W X 18 7/8" H
VPDC56	56" W X 21 1/8" H X 21"D	53 3/4" W X 18 7/8" H
VPMAXD24	14" W X 11" H X 26 3/4" D	11 5/8" W X 9 3/5" H X 24" D
VPS30P	30" W X 11" H	26 5/8" W X 10" H
VPWC	10 1/4" W X 12 7/16" D X 1 5/16" H	6 1/4" W X 8 1/4" D
VTH	16 1/2" W X 10 7/10" H	14 1/4" W X 8 3/8" H
VTRC	19 3/10" W X 26 1/2" H X 24"D	17 1/4" W X 24 1/16" H X 24 1/4" D
VU2DR	16 4/5" W X 21 1/8" H X 21"D	14 5/8" W X 18 7/8" H
HS24RO1R	24" W X 34 1/4" H X 24"D	24 1/4" W X 34 1/2" H X 24 1/4" D
H50IMSR	14 7/8" W X 33 1/2" H X 22 9/16" D	15 1/8" W X 33 3/4" H X 22 3/4" D

Vintage

Like a fine wine, Vintage Products have grown through generations of experience to become the ultimate outdoor cooking and entertainment line. From our remarkably powerful grills and side burners to complete beverage service and refrigeration, the Vintage brand speaks of the finest craftsmanship and truly intelligent design. The Vintage Outdoor Kitchen offers chefs of all abilities the power to create extraordinary meals in an open-air environment.

As any true connoisseur knows, all of the right elements must combine to create something exceptional. Since 2001, Vintage has been that synthesis of style, versatility, and performance.



If you are a traditional Grill Master with limited space, the Vintage 30" charcoal grill is your clear choice!

- ④ Designed and manufactured here in the USA for long lasting charcoal grilling performance
- ④ Constructed from 18/8 heavy duty commercial grade 304 stainless steel
- ④ 476 square inches of stainless steel cooking grid (28 x 17 inches)
- ④ Front door access to easily replenish charcoal while grilling
- ④ Adjustable charcoal tray
- ④ Ash dump

Overall Dimensions (Inches): W 30.5 x H 24.5 x D 22

Model: VCG30 - 30" Charcoal Grill

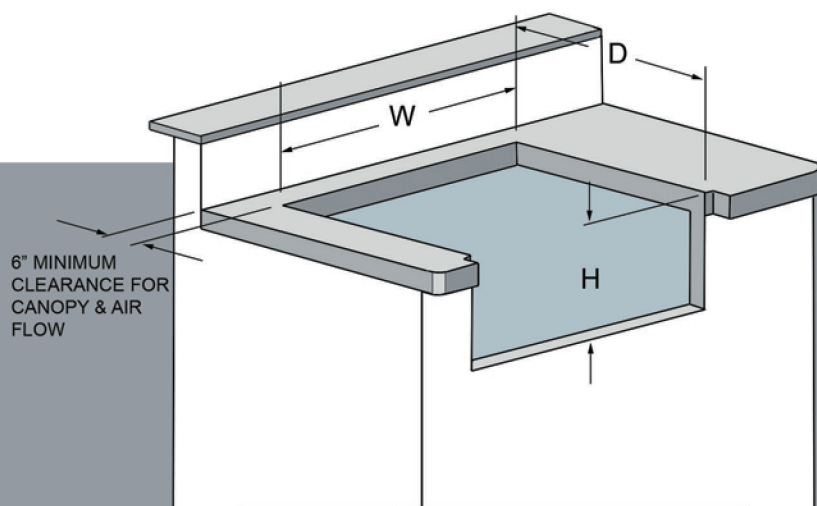


The 42" model offers the perfect amount of space for the charcoal enthusiast seeking to entertain with traditional flair!

- ④ Designed and manufactured here in the USA for long lasting charcoal grilling performance
- ④ Constructed from 18/8 heavy duty commercial grade 304 stainless steel
- ④ 680 square inches of stainless steel cooking grid (40 x 17 inches)
- ④ Front door access to easily replenish charcoal while grilling
- ④ Adjustable charcoal tray
- ④ Ash dump

Overall Dimensions (Inches): W 42 x H 24.5 x D 22

Model: VCG30 - 42" Charcoal Grill



CHARCOAL GRILL	Cutout Dimensions		
	W	D	H
VCG30	28-1/2"	17-5/8"	11-5/8"
VCG42	41"	17"	11-5/8"

