

# Continental

## Refrigerator

### 36" SANDWICH UNIT REFRIGERATORS



SW36-10

#### Models Available

- SW36-8
- SW36-8C
- SW36-12M
- SW36-10
- SW36-10C
- SW36-15M

Utilizing Environmentally Safe, CFC-free R-134a Refrigerant

#### Standard Features

- Unique Air Flow Distribution Allows Pan Product to Maintain 33°–41°F Being in Compliance with and Certified Under the '98 NSF Standard For Preparation Units.
- Modern, State-of-the-Art Styling
- Performance Rated Refrigeration System Utilizing Environmentally Safe R-134a Refrigerant
- Easily Serviceable Back Mounted Compressor
- 2" Non-CFC Polyurethane Foam Insulation
- Spring Loaded, Self Closing Door
- Magnetic Snap-In Gasket
- 5" Casters, two with brakes/two with out brakes
- Heavy-Duty, Epoxy-Coated Steel Shelves
- Interior Hanging Thermometer
- Full Length Nylon Cutting Board
- Cabinet Construction Consisting of Stainless Steel Front and Top, Aluminum End Panels, Case Back and Interior
- Non-Corrosive, Plasticized Fin Evaporator Coil
- Completely Enclosed, Vented and Removable Case Back
- Automatic, Energy Saving, Non-Electric Condensate Disposal
- 1/6 Size Pans, 4" Deep
- 10 ft Cord and Plug Attached

#### Optional Features & Accessories

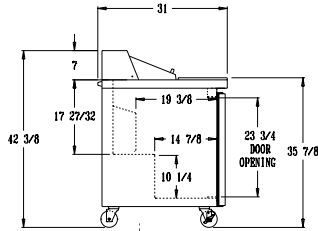
- Legs
- Remote Models R
- Stainless Steel End Panels-SA Models
- Stainless Steel Interior & Exterior-SS Models
- Stainless Steel Finished Back in Lieu of Aluminum
- Electric Condensate
- Pan Opening Sizes
- Stainless Steel Legs
- Additional Shelves
- Door Locks
- Single Overshelf
- Double Overself



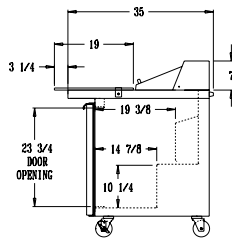
# 36" SANDWICH UNIT REFRIGERATORS

## SPECIFICATIONS DIMENSIONAL DATA

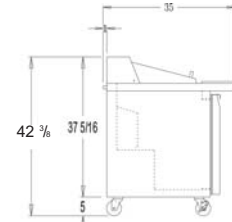
	SW36-8	SW36-10	SW36-8C	SW36-10C	SW36-12M	SW36-15M
Net Capacity (cu. ft.)	10.3	10.3	10.3	10.3	10.3	10.3
1/6 Size Pans	8	10	8	10	12	15
Width, Overall (in.)	36	36	36	36	36	36
Depth, (incl. Hdls. & Bumpers) (in.)	31	31	31	31	31	31
Depth, Body Only (Less Door(s)) (in.)	27 1/2	27 1/2	27 1/2	27 1/2	27 1/2	27 1/2
Depth, Cutting Board (Std. Top)	12	12	19	19	10	10
Height, Overall (incl. 5" Casters) (in.)	42 3/8	42 3/8	42 3/8	42 3/8	42 3/8	42 3/8
Shelf Area (sq. ft.)	4.6	4.6	4.6	4.6	4.6	4.6
No. of Shelves	2	2	2	2	2	2
No. of Doors	2	2	2	2	2	2
Condensing Unit Size (H.P.)	1/5	1/5	1/5	1/5	1/5	1/5
Refrigerant	R134a	R134a	R134a	R134a	R134a	R134a
Cabinet Electrical	115/60/1	115/60/1	115/60/1	115/60/1	115/60/1	115/60/1
Amps	6.3	6.3	6.3	6.3	6.3	6.3
Fans	2	2	2	2	2	2
Interior Depth (in.)	20	20	20	20	20	20
Interior Height (in.)	26 1/4	26 1/4	26 1/4	26 1/4	26 1/4	26 1/4
Interior Width (in.)	32	32	32	32	32	32
Shipping Weight (lbs.)	240	240	240	240	250	250
Shipping Height (in.)	43 1/4	43 1/4	43 1/4	43 1/4	43 1/4	43 1/4
Shipping Length (in.)	43	43	43	43	43	43
Shipping Depth (in.)	46	46	46	46	46	46



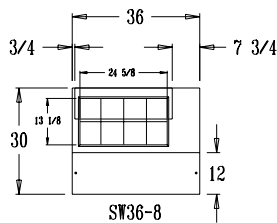
Standard Top Side View



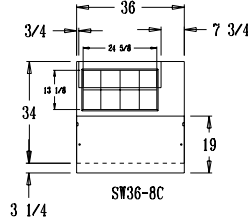
C-Top Side View



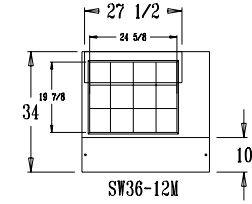
M-Top Side View



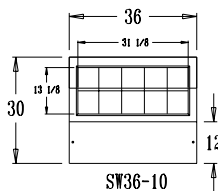
SW36-8



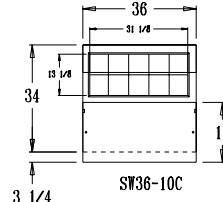
SW36-8C



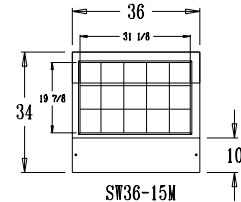
SW36-12M



SW36-10



SW36-10C



SW36-15M

Continental

---

Refrigerator

A Division of National Refrigeration & A/C Products, Inc.  
 539 Dunksferry Road Bensalem, PA 19020  
 (800) 523-7138 Fax: (215) 244-9579  
[www.continentalrefrigerator.com](http://www.continentalrefrigerator.com)