

INCREDIBLE QUALITY

# EXCELLENT VALUE

- Heavy gauge, hand dipped wire shelves
- Automatic defrost with forced air circulation
- Heavy-duty door frame is built to last
- Stackable – saves valuable floor space



Model SKTR7F



Money Isn't All You're Saving

**SILVER KING**<sup>®</sup>  
WE'VE GOT REFRIGERATION DOWN COLD.<sup>™</sup>

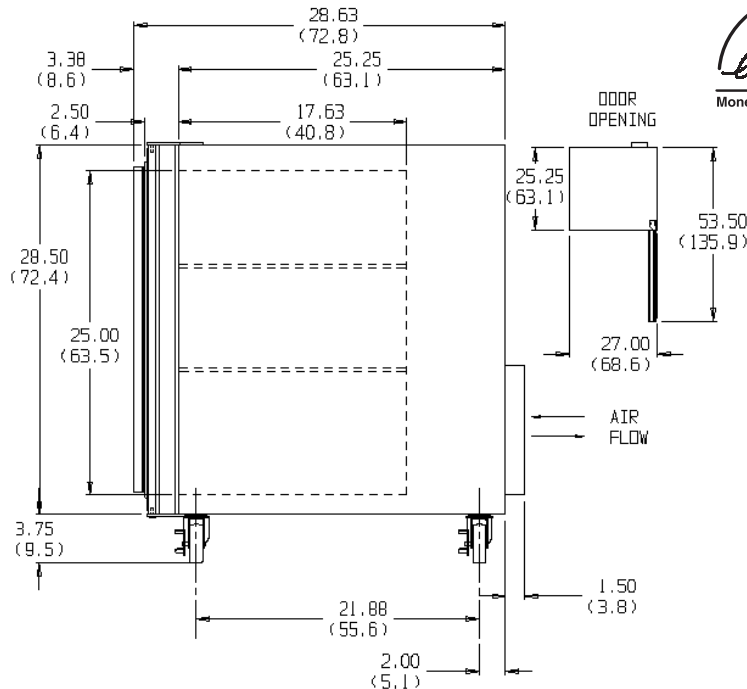
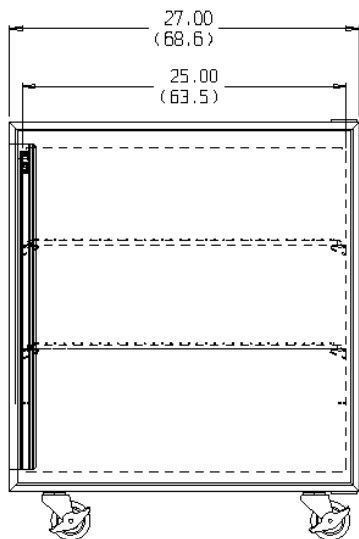
# UNDERCOUNTER REFRIGERATOR SPECIFICATIONS

<b>MODEL SKTR7F</b>	<b>EXTERIOR</b>	Stainless steel, Galvanized back.
	<b>INTERIOR</b>	Corrosion-resistant material with coved corners throughout for easy cleaning and sanitation.
	<b>INSULATION</b>	Environmentally friendly foamed-in-place polyurethane insulation for maximum strength and durability.
	<b>DOOR</b>	Polyurethane insulation, heavy-duty extruded aluminum frame, stainless steel exterior door panel and extra heavy-duty magnetic "Thermo Rubber" door gaskets combine to make the toughest, longest lasting door in the industry. Door is easily field reversible.
	<b>SHELVES</b>	Heavy gauge wire shelves are hand dipped, not sprayed, providing double thick epoxy coating for superior durability and smooth finish. Adjustable in 1/2" increments on stainless steel pilasters.
	<b>REFRIGERATION</b>	CFC-free refrigerant. Hermetically sealed, high efficiency, self contained refrigeration system features automatic defrost and forced air circulation. Evaporator coil positioned for uniform air distribution and optimum cooling. Adjustable temperature control and built-in temperature indicator standard. Automatic condensate evaporator means no plumbing or floor drains.
	<b>ELECTRICAL</b>	Standard as 115 volt, 60Hz, single phase operation. 8 foot, 3-wire power cord with NEMA 5-15 plug. Available in 230 volt, 50 Hz, single phase.
	<b>LISTINGS</b>	cULus (U.S. and Canada), NSF International.
	<b>WARRANTY</b>	One year parts and labor warranty on cabinet and refrigeration system. Five year warranty on compressor.
	<b>ACCESSORIES</b>	Stacking Kit, Mobility Kit.

MODEL	LENGTH	DEPTH	HEIGHT	STORAGE CAPACITY	SHELVES	SHELF AREA	COMPRESSOR	AMPS	WEIGHT
SKTR7F	27"	28 7/8"	32 1/4"	6.5 cu. ft.	2	8.1 sq. ft.	1/5 hp	4.5	165 lbs



Specifications subject to change without notice.



Dimensions in inches and centimeters



1600 Xenium Lane North  
 Minneapolis, MN 55441-3787  
 Phone (763) 923-2441  
 Fax (763) 553-1209  
 www.silverking.com

#FNSKTR7F04  
 © Silver King 2009  
 Printed in U.S.A.