

Continuous Feed Vegetable Prep



- Heavy-duty, 3 HP, Single phase motor.
- Large range of 39 processing discs to select from.
- Has dicing and french fry capabilities.
- All metal large veg prep assembly.
- Two hoppers in one head - one large full moon hopper for cutting large products (will accommodate whole heads of cabbage and lettuce) and one round hopper for cutting long vegetables and delicate cutting (i.e. tomatoes, carrots).
- Automatic restart of machine with the large pusher.
- Attachments easily removed for maximum cleaning ability.
- Packed with two processing discs (28064 - 3mm/1/8" slicing disc & 28058 - 3mm/1/8" grating disc) as standard.
- 1 year parts and labor

Prepare 1500 servings in 3 hours or less.

Vegetable prep attachment designed for quality continuous feed slicing, dicing, shredding, grating, french fry, and julienne. Accommodates 39 different processing discs.



Robot Coupe U.S.A., Inc.
P.O. Box 16625
Jackson, MS 39236-6625
1-800-824-1646 • (601) 898-8411
FAX: (601) 898-9134
www.robotcoupeusa.com • e-mail: info@robotcoupeusa.com

SPECIFICATIONS ON REVERSE SIDE

Specifications

STANDARD MODEL: includes motor base unit with continuous feed attachment, one 1/8" (3mm) slicing disc and one 1/8" (3mm) medium grating disc.

ELECTRICAL REQUIREMENTS: 120V, 60Hz, 13.5 Amps, single phase, 1 speed., NEMA 5-15 plug.

SWITCHING: Control panel with push-type on and off buttons.

MOTOR: 3 HP, 425 RPM, belt drive, fan-cooled.

WEIGHT: 65 lbs. net, 69 lbs. approximate shipping weight.

PROCESSING DISCS

* For Series D machines only

Slicing Discs

28062	1/32" (1mm)
28063	5/64" (2mm)
28064	1/8" (3mm)
28004	5/32" (4mm)
28128*	3/16" (5mm)
28129*	5/16" (8mm)
28130*	3/8" (10mm)
28131*	9/16" (14mm)
28081	3/4" (19mm)
28132*	25/32" (20mm)
28133*	1" (25mm)

Ripple Cut Slicers

27068	5/64" (2mm)
27069	1/8" (3mm)
27070	3/16" (5mm)

Grating Discs

28270	1/16" (1.5mm)
28057	5/64" (2mm)
28058	1/8" (3mm)
28073	5/32" (4mm)
28163	3/16" (5mm)
28164	9/32" (7mm)
28165	11/32" (9mm)
28055	Fine Pulping
28061	Hard Cheese Grate

French Fry Kits

28134*	5/16" (8mm)
28135*	3/8" (10mm)

Romaine Lettuce Kit

28133/104031	2"
--------------	----

Julienne Discs

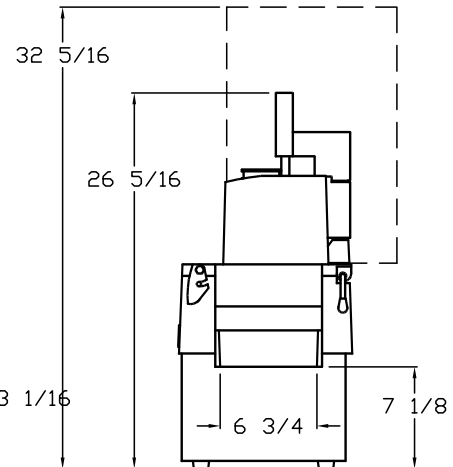
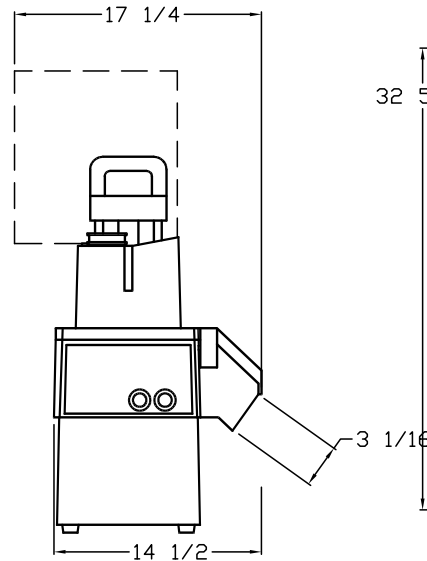
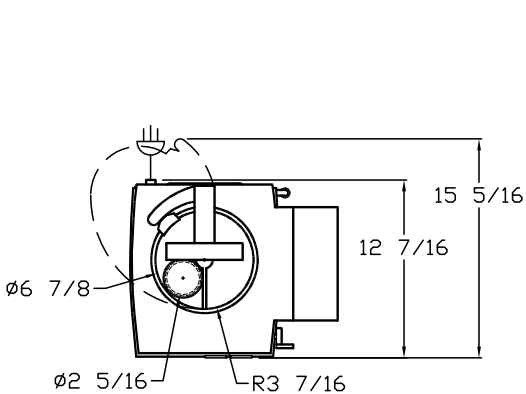
28051	5/64" x 5/64" (2mm x 2mm)
27072	5/64" x 5/32" (2mm x 4mm)
27066	5/64" x 1/4" (2mm x 6mm)
27067	5/64" x 5/16" (2mm x 8mm)
28052	5/32" x 5/32" (4mm x 4mm)
28053	1/4" x 1/4" (6mm x 6mm)
28054	5/16" x 5/16" (8mm x 8mm)

Dicing Kits

28110	3/16" x 3/16" (5mm x 5mm)
28111	5/16" x 5/16" (8mm x 8mm)
28112	3/8" x 3/8" (10mm x 10mm)
28113	9/16" x 9/16" (14mm x 14mm)
28114	25/32" x 25/32" (20mm x 20mm)
28115	1" x 1" (25mm x 25mm)

OPTIONAL EQUIPMENT: 37 additional processing discs and single or multiple disc racks or wall-mounted disc rack.

STANDARDS: ETL electrical & sanitation, cETL (Canada)



Robot Coupe U.S.A., Inc.
 P.O. Box 16625
 Jackson, MS 39236-6625
 1-800-824-1646
 (601) 898-8411
 FAX: (601) 898-9134
 www.robotcoupeusa.com
 e-mail: info@robotcoupeusa.com

Distributed by: