

MONTAGUE

VECTAIRE



Gas Convection Ovens 2-70 and 2-115 Series



2-115B
Shown with
optional S/S
side and top.

GENERAL

Two separately controlled, indirect fired "muffled" ovens, (stacked). 38-1/4" wide x 39-1/2" deep x 78" high (97.2 x 100.3 x 198.1 cm) overall, including 6" (15.2 cm) adjustable legs. 27" wide x 27" deep x 20-1/2" high (68.6 x 68.6 x 52.1 cm) interiors accommodate 18" x 26" (45.7 x 66 cm) pans lengthwise or widthwise. Used for all purpose baking and roasting. Excellent for reconstitution of frozen foods, (115,000 BTU/HR models).

DOOR STYLES: Split-type. Each door to have double pane thermal viewing window. A single handle opens both doors.

MODELS:

2-70Z, 2-115Z - horizontal opening doors provide shelf for loading/unloading.

2-70A, 2-115A -vertical opening doors, side mounted.

2-70B, 2-115B -combination doors; horizontal opening top deck, vertical opening bottom deck.

2-70C, 2-115C -combination doors; vertical opening top deck, horizontal opening bottom deck.

STANDARD FEATURES

- Porcelainized 16 gauge steel interiors.
 - Removable 9-position bright nickel rack guides, per section.
 - 26" x 27" (66 x 68.6 cm) bright nickel racks with rack stop and non-tip feature, five per section. (10 racks total.)
 - One fully welded tubular dual steel and cast iron burner per oven section.
 - 16 gauge stainless steel removable burner baffle.
 - 4" (10.2 cm) of insulation compressed to 2" (5.1 cm) within metal sheathing.
 - Durable door gaskets, adjustable.
- CONTROLS, (per oven section):**
- Suffix G - throttling-type gas thermostat with a temperature adjustment range of 150°F (66°C) to 500°F (260°C), with "Burner-On" indicator light. (Standard for Natural gas.)
 - Suffix E- snap acting electric switch-type thermostat with a temperature adjustment range of 200°F (93°C) to 500°F (260°C) with "Burner-On" indicator light. (Standard for Propane gas.)
 - Automatic fan shut-off when door is opened. Separate rocker switch for fan operation with oven Cool-Down mode.
 - Momentary "On" rocker switch controls two interior oven lights.
 - One hour electric timer, per oven section.

FINISH:

Satin stainless steel front. Remaining exterior black. All painted surfaces have electrolytic zinc undercoating for corrosion protection and longer life.

OPTIONAL, (*extra cost):

- Oven: *S/S left side *S/S right side *S/S top
 *Louvered back panel: *S/S *Black
- Flue Deflector: *S/S

MOTOR:

Pancake type, air cooled, single speed 3/4 Hp, with thermal overload protection. Sealed, self-lubricating ball bearing requires no lubrication for the life of the bearing. Motor is serviceable from the front through the oven chamber.

ELECTRICAL, (*extra cost), separate supply per section:

- 120V, 1Ph, 60Hz, 7.4 amps. 6' (13.5 cm) grounded supply cord.
- 208-240V, 1Ph, 60Hz, 4.1 amps, 3 wire.
- *♦208-240V, 3Ph, 60Hz, 3.0 amps, 4 wire.
- *♦440-480V, 3Ph, 60Hz, 1.4 amps, 4 wire.
- ♦Requires *3PH motor with Magnetic Starter on rear of oven. or *3PH motor with Magnetic Starter by others.

OPTIONS, (*extra cost):

- *CASTERS - Set of 4
5" wheel (12.7 cm), 6" height (15.2 cm).
- *DOWN DRAFT DIVERTER, (in-lieu-of std. flue deflector).
 *Black *S/S
- *DRIP TRAY, S/S. - (To be placed on oven rack).
- *ELECTRONIC IGNITION, Suffix EI - available on all ovens with vertical doors.
- *FLEX CONNECTOR KIT, (per deck) - hose, disconnect and restraining device: *3' x 3/4" (91.4 x 1.9 cm)
 *4' x 3/4" (122 x 1.9 cm) *5' x 3/4" (152 x 1.9 cm)
- *IFO, (Intermittent Fan Operation) - adjusts for delicate baking. 2-speed motor recommended.
- *MOIST AIR - Creates steam for bread crusting. Vent included. (Water hook-up required). Not available with IFO or horizontal doors.
- OVEN INTERIOR:
 *Full S/S oven lining, including fan baffle, (ASC).
- *RACKS, EXTRA:
 *___ Standard *___ Extra Heavy (for roasting).
- RACK GUIDES, 11-position.
- *SECURITY OPTIONS, (prisons, etc). Consult factory.
- SOLID DOORS - (in-lieu-of windows).
- *SOLID STATE THERMOSTAT.
- *STEAM JETS - (Steam generator required/supplied by others.)
- *TOE BASE, 1" (2.5 cm) - For curb mounting.
- *TWO SPEED MOTOR, 1PH only.
 *115V; 11.6 amps @ 1725 rpm, 4.0 amps @ 1140 rpm
 *208/240V; 5.9 amps @ 1725 rpm, 2.4 amps @ 1140 rpm

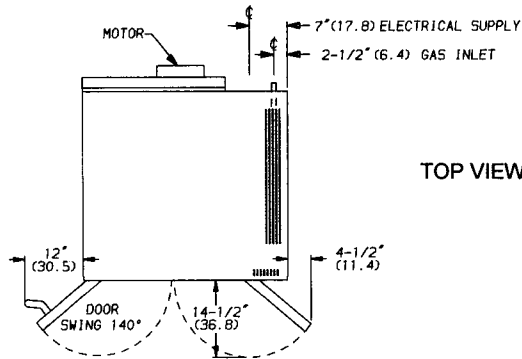


MONTAGUE 2-70 and 2-115 Series

Gas Vectaire Convection Ovens

Standard configuration available in Montague Auto CAD Foodservice Symbols library.

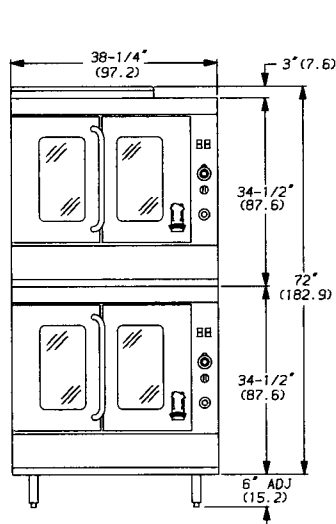
Dimensions in parenthesis are centimeters.



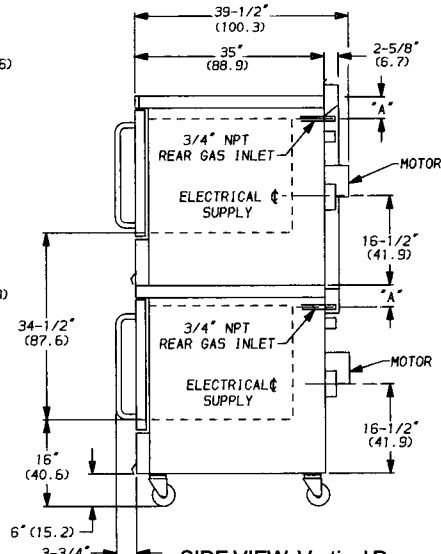
TOP VIEW

RACK SPACING	
# Racks/Oven Section	Clearance
5	3-3/8" (8.6)
9	1-1/2" (3.8)

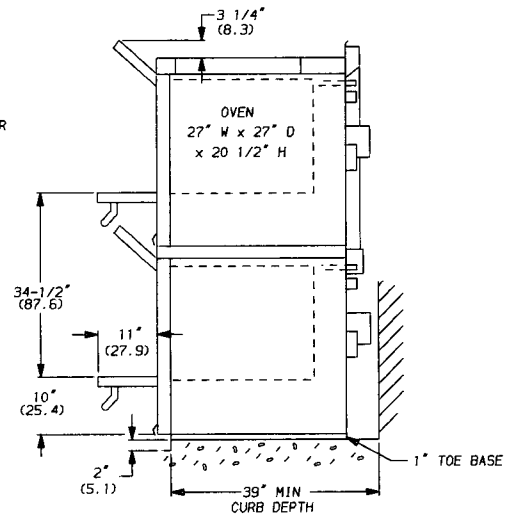
SUFFIX	DIM "A"
G	1-3/4" (4.4)
E	3-1/2" (8.9)



FRONT VIEW, Vertical Doors -
Shown with standard 6" (15.2 cm) legs.



SIDE VIEW, Vertical Doors -
Shown with optional 5" (12.7 cm) casters.



SIDE VIEW, Horizontal Doors - Shown with
optional 1" (2.5 cm) Toe Base for curb mount.

IMPORTANT

Commercial oven(s) must be installed in accordance with local codes or, in the absence of local codes, with the National Fuel Gas Code ANSI Z223.1. Compliance with codes is the responsibility of the Owner and Installer.

Adequate Ventilation System required. Must be installed in accordance with local codes.

AGA Design Certified: In accordance with ANSI Z83.12 Gas Foodservice Equipment - ovens. NOTE: These appliances are intended for commercial use by professionally trained personnel. *NOT Intended For Household Use.*

Minimum Clearances:	Combustible Construction	Noncombustible Construction
Back Wall:	6" (15.2 cm)	5" (12.7 cm)
Left & Right Side:	6" (15.2 cm)	0"
With 6" (15.2 cm) legs: suitable for installation on combustible floors. Curb mounted: For use only on noncombustible counters or floors with 1" (2.5 cm) toe base, Part No. 555.		

TYPE OF GAS	Natural	Propane	
Manifold Pressure	3.5" WC	10.0" WC	
Model	# burners	BTU/HR	BTU/HR
All 2-70	1	70,000 ea.	70,000 ea.
All 2-115	1	115,000 ea.	90,000 ea.

GAS INLET SIZE (for all models):

One 3/4"(1.9 cm) NPT at right rear. One 3/4"(1.9 cm) NPT pressure regulators are provided and must be used when appliance is connected to gas supply.

Optional, *(extra cost):

- *One interconnecting manifold for 3/4"(1.9 cm) NPT gas supply, (2-70).
- *One interconnecting manifold for 1"(2.5 cm) NPT gas supply, (2-115).

NOTE: Specify type of gas Natural Propane
Specify elevation if installing above 2000 feet.

ENTRY CLEARANCE:
34-3/4" (88.3 cm) uncrated

SHIP WGT: (Class 70)
1138 Lbs. 516 kg.

APPROX. CUBIC FT./METERS:
2 cartons @ 37 cu. ft./1.05 m3 each.

Montague's continuing commitment to quality/product improvement can cause specification and design changes without prior notice.