

Project	Quantity	Item #
Model Specified:		CSI Section 11400

### Spacesaver Refrigerator Models/ Self-Contained



Model UR30HT  
(shown with optional full length black glass door)

### One & Two Section Reach-In Models, 24" Deep



Stainless Exterior  
& Interior

30" Wide Model	UR30HT
48" Wide Model	UR48HT

The Spacesaver product line was designed for use in a variety of applications where both narrow width and shallow depth are required. Their compact footprints are all 24" deep, with one section units being 30" wide and two section units being 48" wide. They can be built in, or left freestanding. Clear or black glass doors are available as an option on any refrigerated model. These features all add up to give the Spacesaver models superior flexibility.

### Standard Features

- Stainless Steel Exterior And Interior
- Full-Length Stainless Steel Door(s) With Lock(s)
- Exterior Mounted Digital Thermometer
- Adjustable Heavy Duty Chrome Plated Shelves
- Magnetic Snap-In Door Gaskets
- Guaranteed For Life Stainless Steel Horizontal Work Flow Door Handles - (solid doors only)
- Guaranteed For Life Door Hinges
- Self-Closing & Stay Open Door Features
- Stainless Steel Breaker Caps
- Energy Saving Defogger Control
- Automatically Activated Interior Incandescent Lights
- Set Of Four (4) 6" High Stainless Steel Adjustable Legs
- One Piece Lift-Up Louver Assembly
- Automatic Condensate Removal System
- Cord and Plug Attached
- 1 Year Parts And Labor Warranty
- 5 Year Compressor Warranty

### Options & Accessories

- Full Height Clear Glass Door(s)
- Half Height Stainless Steel or Clear Glass Doors
- ¾ Length Stainless Steel or Clear Glass Door(s) Above Two Drawers, Each Section
- Additional Chrome Plated Shelves
- Stainless Steel Wine Racks
- 4½" High Flush Stainless Steel Base With Levellers & Rollers
- Set of Four (4) 6" High Casters
- Two Year Service Labor Warranty Available



Supplied With One  
NEMA 5-15 P Plug



Listed by Underwriters Laboratories Inc., to U.S. and Canadian safety standards and Listed by NSF International.

Approval: \_\_\_\_\_



TRAULSEN  
4401 BLUE MOUND RD.  
PHONE 1 (800) 825-8220  
Website: www.traulsen.com

FT. WORTH, TX 76106  
FAX-MKTG. 1 (817) 624-4302

SECTION  
8-1

Project	Quantity	Item #
Model Specified:		CSI Section 11400

### Specifications

#### Construction, Hardware and Insulation

Unit exterior sides, front, door and interior are constructed of heavy gauge stainless steel. Exterior top, back and bottom are constructed of heavy gauge aluminized steel. Door is equipped with guaranteed for life cam lift, gravity-action, metal glide hinges with stay open feature at 120°. Guaranteed for life, work flow handle is mounted horizontally over recess in door which limits protrusion from door face into aisle ways. Cylinder door locks are provided standard. On models equipped with optional drawers, these are supplied with two removable anodized aluminum pans per drawer.

Easily removable for cleaning, vinyl magnetic gasket assures tight door seal. Anti-condensate heaters are located behind each door opening.

Cabinet and door contain high density, non-CFC, foamed in place polyurethane insulation.

All models are supplied standard with a set of four (4) 6" high adjustable stainless steel legs.

DIMENSIONAL DATA	UR48HT	UR30HT
Net Capacity - cu. ft.	31.6 (894 cu l)	17.9 (455 cu l)
Length - Overall in.	48 (121.9 cm)	29 <sup>7</sup> / <sub>8</sub> (75.9 cm)
Depth - Cabinet Only in.	24 (61 cm)	24 (61 cm)
Depth - with Door Open 90° in.	45 <sup>5</sup> / <sub>8</sub> (115.9 cm)	49 <sup>5</sup> / <sub>8</sub> (126 cm)
Depth - Overall in.	27 (68.5 cm)	27 (68.5 cm)
Clear Door Width in.	17 <sup>1</sup> / <sub>2</sub> (44.8 cm)	21 <sup>1</sup> / <sub>2</sub> (54.6 cm)
Clear Full Door Height in.	57 <sup>1</sup> / <sub>2</sub> (146.4 cm)	57 <sup>1</sup> / <sub>2</sub> (146.4 cm)
Clear Half Door Height in.	27 <sup>1</sup> / <sub>2</sub> (69.9 cm)	27 <sup>1</sup> / <sub>2</sub> (69.9 cm)
Clear 3/4 Door Height in.	39 <sup>3</sup> / <sub>4</sub> (100.9 cm)	39 <sup>3</sup> / <sub>4</sub> (100.9 cm)
Height - Overall on 6" Legs in.	83 <sup>1</sup> / <sub>4</sub> (211.5 cm)	83 <sup>1</sup> / <sub>4</sub> (211.5 cm)
Height - Overall on 4 <sup>1</sup> / <sub>2</sub> " Base in.	81 <sup>3</sup> / <sub>4</sub> (207.6 cm)	81 <sup>3</sup> / <sub>4</sub> (207.6 cm)
Number of Shelves	10	5
Shelf Area - sq. ft.	34 (3.2 sq m)	15.8 (1.5 sq m)
<b>ELECTRICAL DATA (at 115/60/1)</b>		
Voltage	115/60/1	115/60/1
Feed Wires with Ground	3	3
Full Load Amperes	7.8	4.4
Wattage <sup>1</sup>	531	354
<b>REFRIGERATION DATA</b>		
Refrigerant	R-134a	R-134a
BTU/HR - HP <sup>2</sup>	2331 (1/8 HP)	848 (1/8 HP)
<b>CARTON DIMENSIONS Domestic Crated Only</b>		
Length - crated in.	63 (160 cm)	35 (88.9 cm)
Depth - crated in.	43 (109.2 cm)	43 (109.2 cm)
Height - crated in.	85 <sup>1</sup> / <sub>4</sub> (216.5 cm)	85 <sup>1</sup> / <sub>4</sub> (216.5 cm)
Volume - crated cu. ft.	131 (3711 cu l)	71 (2010 cu l)
<b>WEIGHT DATA</b>		
Net Weight - uncrated lbs.	450 (204 kg)	340 (154 kg)
Gross Weight - crated lbs.	550 (249 kg)	430 (195 kg)

#### NOTES

NOTE: Figures in parentheses reflect metric equivalents.  
 1=Wattage is determined by listed amps X listed volts X an average run time of 70% for refrigerators and 80% for freezers.  
 2=Based on a 90 degree F ambient and 20 degree F evaporator.

NOTE: When ordering please specify: Voltage, Hinging, Door Size, Options and any additional warranties. For fast order entry: Fax 1 (800) 765-8728.

Continued product development may necessitate specification changes without notice. Part No. TR35816 (revised 12/05)

#### Refrigeration System

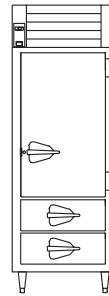
A balanced, top-mounted refrigeration system using R-134a refrigerant is located behind a one piece louver assembly for easy access. Automatic condensate removal is provided through use of a bottom mounted electric condensate evaporator. Standard operating temperature is 34-38° F.

#### Interior

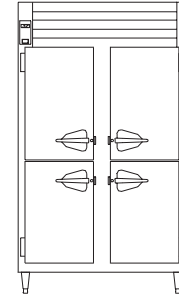
Models UR30HT and UR48HT are supplied with a standard compliment of five (5) chrome plated shelves per section.

#### Warranties

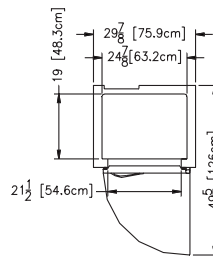
The standard warranty is a five year compressor warranty and a one year parts and labor warranty on all components and the cabinet. Additional warranties are available at extra cost.



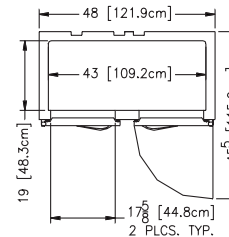
Elevation - UR30HT



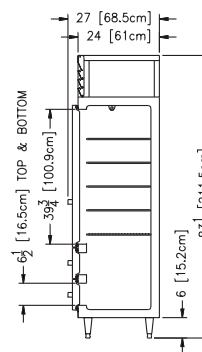
Elevation - UR48HT



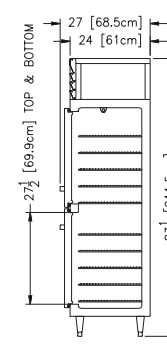
Plan - UR30HT



Plan - UR48HT



Section - UR30HT



Section - UR48HT

NOTE: Freight charges are FOB destination for dock to dock delivery within the continental USA. Liftgate delivery charges are additional. For inside delivery charges, please consult fac-