

PROJECT _____

QTY. _____ ITEM NO _____



Reaching New Heights

Two Door Sandwich Preparation Unit



JSP-6016
60.0" wide, 15 cu.ft.

Stainless steel interior & exterior standard!
Front breathing!
The most durable condiment lid in the industry!

STANDARD FEATURES:

- Front Breathing
- Thermostatic Control
- Stainless Steel Catch Tray under pans
- CFC-free R-134a Refrigerant
- 2 Epoxy-Coated Wire Shelf
- 5" Casters Included
- Reinforced Door Hinges
- Fully Coved Interior Corners
- Self-Contained Rear Mounted Refrigeration System
- 2.5" Thick Foamed-in-place Polyurethane Insulation
- Fully-Recessed Door Handles
- Automatic Door Closure with 90° Hold Open Feature
- Evaporative Hot Gas Condensate Pan
- Snap-In Magnetic Door Gasket
- Made in USA from imported parts

MATERIALS:

INTERIOR: Stainless steel interior walls, floor, and ceiling.
Epoxy-coated wire shelves.

EXTERIOR: Stainless steel worktop.
Stainless steel sides and doors.



Standard 007

C LISTED US

ISO 17025:2005 Certified

DIMENSIONAL DATA

Model No.	L	D	H	Cu.Ft.	Lids	Pans	H/P	Volt	Amp.	NEMA	Shipping Wt.
JSP-6016	60.0	29.5	42.7	15	2	16	1/3	115/60/1	8.9	5-15P	405



Sandwich Prep Unit JSP-6016

Description: Two solid door sandwich prep unit, 16 cu. ft

Features & Benefits

Stainless steel interior and exterior for greater durability, construction and appearance.

Self-contained **rear-mounted refrigeration** with high humidity coated fin coil evaporator.

- Holds 33° F to 41° F for refrigerator

2.5" thick, foamed-in-place polyurethane high density insulation.

16 poly-carbonate, 1/6 size pans.

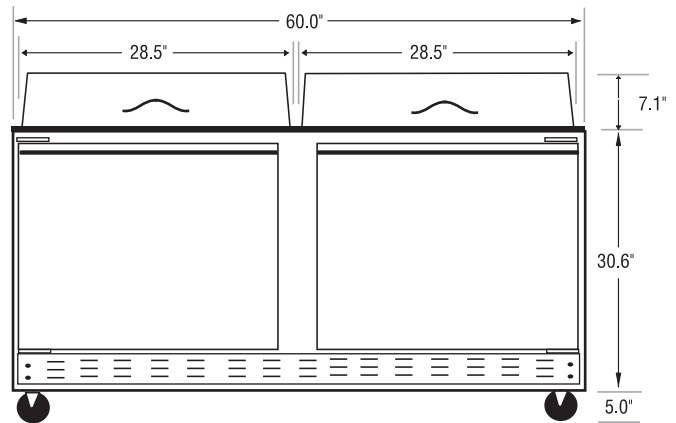
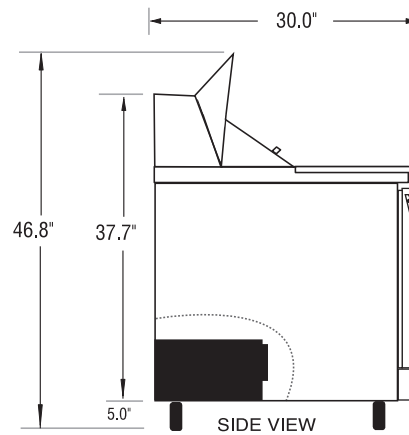
5" casters included- for easy mobility and installation.

Twelve inch full length removable cutting board.

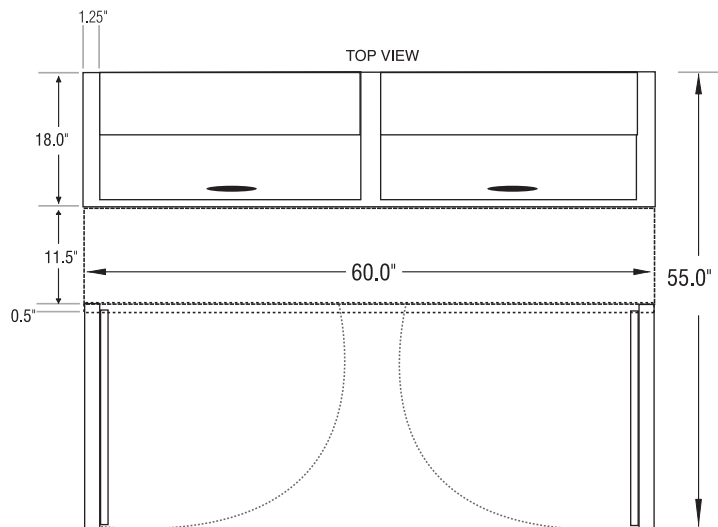
Stainless steel top.

Self-closing doors with 90 degree hold-open feature and fully-recessed handles.

Hot gas evaporative condensate pan - no floor drain required!

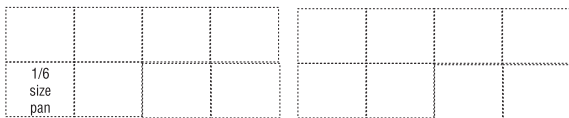


FRONT VIEW



TOP VIEW

PAN CONFIGURATION



OPTIONS

- Extra Interior Shelves Qty. _____
- Other Specify _____

General Information

Cubic Ft.: 15

Shelf Size: 17.5" x 22.9"

Pans: 16

#Lids: 2

Exterior: Stainless

Unit Weight: 375 lbs.

Interior: Stainless

Ship Weight: 405 lbs.

Technical Data

Refrigerant: R-134a

Volts: 115

Start Amps: 10.8

#Compressors: 1

Run Amps: 8.9

Cord Length: 82 in.

Horsepower: 1/3